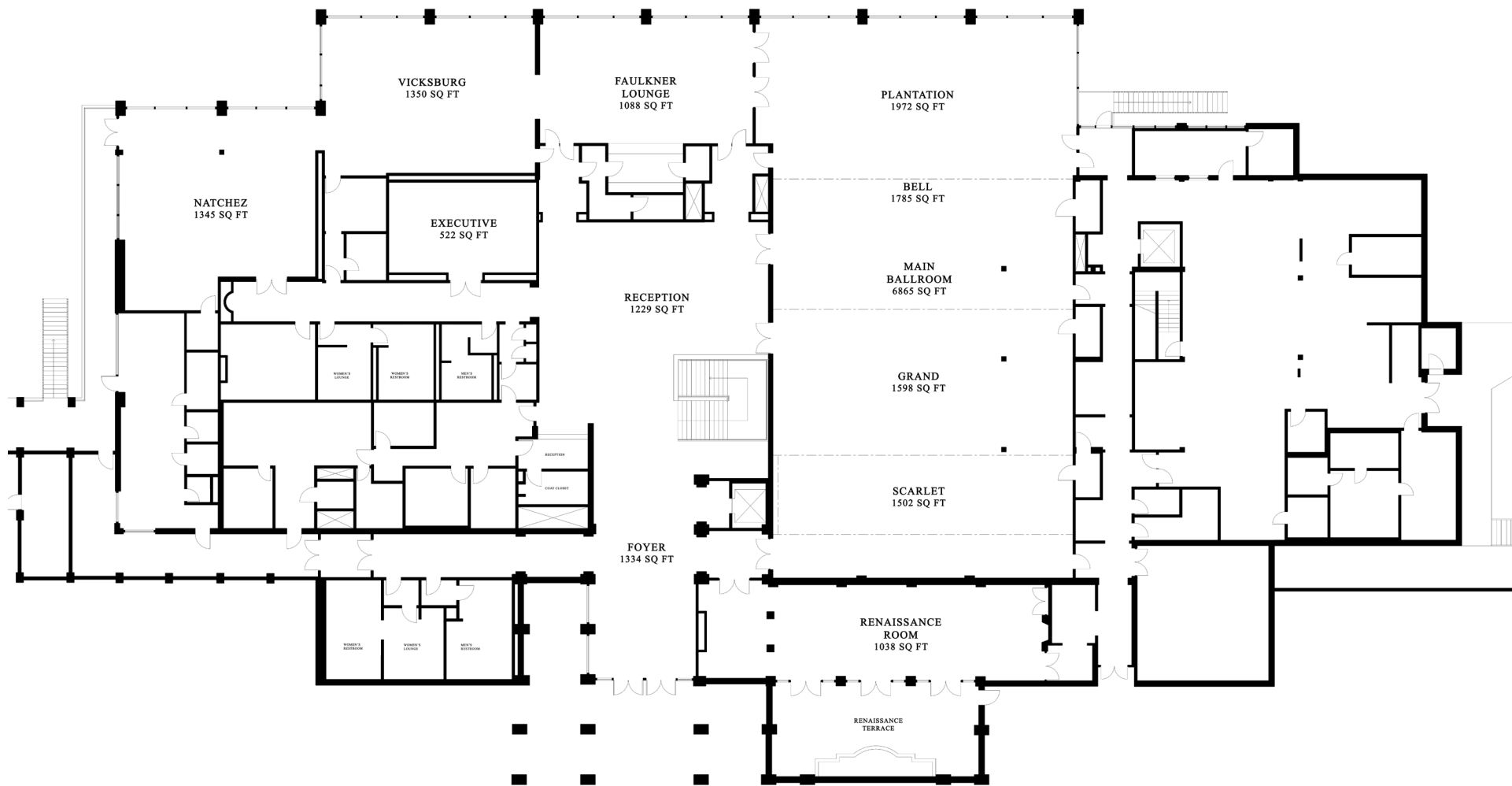


The Country Club of Jackson



Executive
29'x18'
Seated:16

Foyer
63'6" x 21'
Reception:60

Reception
45'6" x 27'
Reception:200

Main Ballroom
60'8" x 113'2"
Seated:550
Reception:650

Plantation
60'8" x 32'6"
Seated:120
Reception:175

Grand
60'8" x 26'4"
Seated:60
Reception:125

Bell
60'8" x 29'5"
Seated:60
Reception:150

Scarlet
60'8" x 24'9"
Seated:60
Reception:125

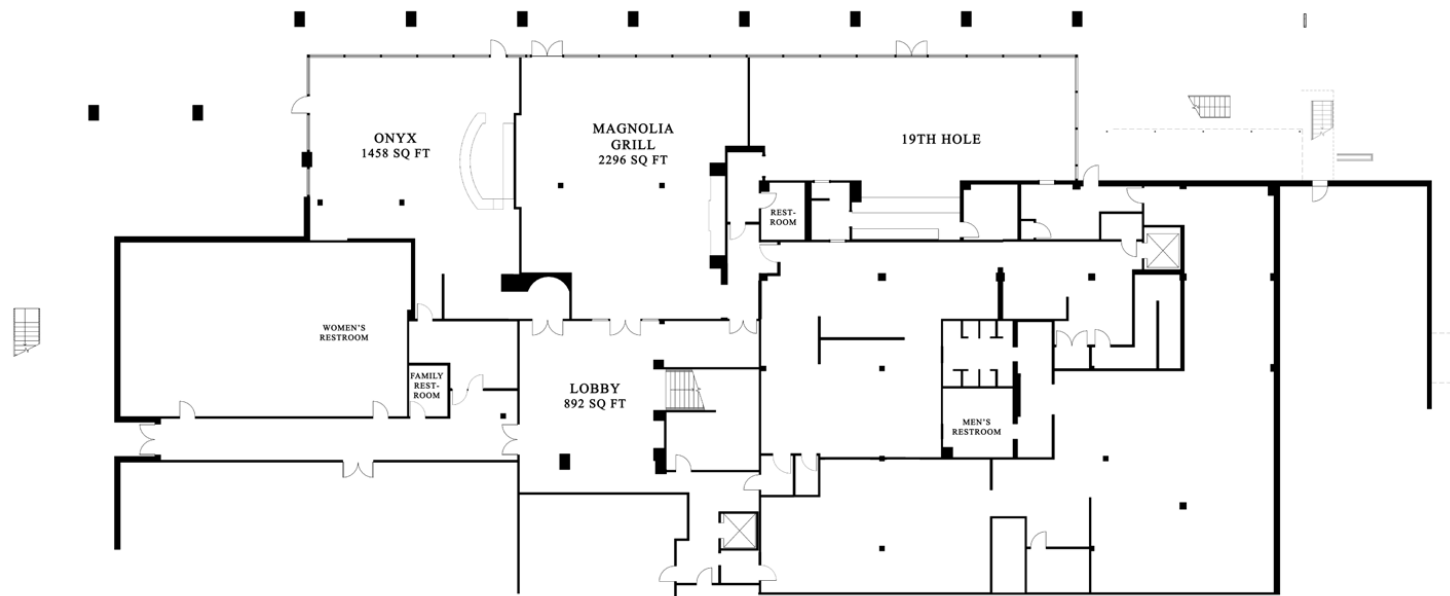
Renaissance Room
54'2" x 19'2"
Seated:40
Reception:75

Natchez
39'8" x 33'11"
Seated:64
Reception:90

Vicksburg
43'1" x 31'4"
Seated:96
Reception:120

Faulkner Lounge
43'1" x 25'3"
Seated:56
Reception:90

The Country Club of Jackson



Onyx
41'2" x 35'8"
Reception: 75

Magnolia Grill
44'7" x 51'6"
Seated: 96
Reception: 150

Lobby
26'5" x 33'9"
Reception: 80